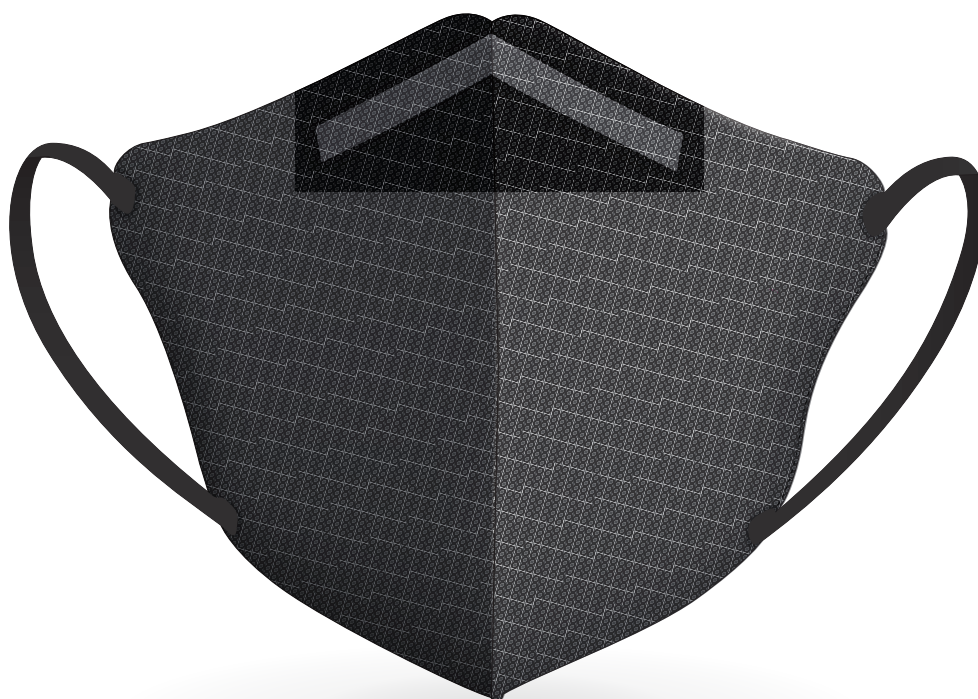


**NANO**  
FIBER



# filtration halfmask

RespiPro® Carbon



**FFP2 halfmask against smog,  
fine dust, allergens and odors**



designed  
in Europe



filters PM2.5  
particles



UV cut 99 %



3 pieces



size

Distributor



**Producer**  
RESPILON Group s.r.o.  
Brno, Czech Republic  
phone: +420 530 332 163  
web: [www.respilon.com](http://www.respilon.com)



## filtration halfmask

Filtration Halfmask RespiPro® Carbon FFP2 NR protects you against the dangerous particles in the air thanks to the new revolutionary nanofiber filter made by RESPILON®.

**Shelf life:** 7 years from the date of production on the package

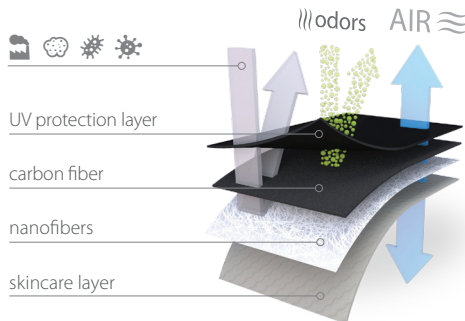
**Primary purpose:** protection of respiratory tract against aerosols, solid and liquid particles and odors.

**Storage:** store in original packaging, away from contaminated areas, dust, sunlight, extreme temperatures, excessive moisture, and damaging chemicals.

**Storage conditions:** temperature from -20 °C to +40 °C, max. relative humidity: <95 %

**Usage:** not for use in atmospheres containing less than 19.5 % oxygen. Only to be used for healthcare protection at workplace. Not to be used in areas with open flames.

### RESPILON® filter



### Warning

Please, read the instructions before putting the half mask on. Stop using the half mask immediately if it's causing you any discomfort. Facial hair and hair can affect the face fit of the half mask and reduce its protective qualities. Don't lend your half mask to anyone. Re-use or extended use (beyond 5 hours) may lead to infection or cross-contamination. Do not use the half mask when concentrations/contaminants are unknown or immediately dangerous for life or health. When to replace: Go to a clean, safe area away from other people, and replace your half mask if it is damaged, has been splashed or sprayed with body fluids, or if it becomes harder to breathe through.

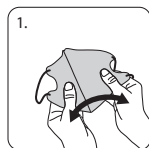
### Select proper size

1. Measure the distance (in cm) shown in the picture
2. Compare the measured distance in cm with the size coverage chart

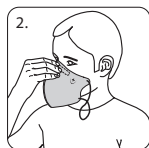


**Size Coverage:** M size ≤ 12 cm  
L size ≤ 16 cm

### Application



Open the package, take out the filtration half mask and unfold it.



Place the filtration half mask on the root of your nose and hold it with one hand.



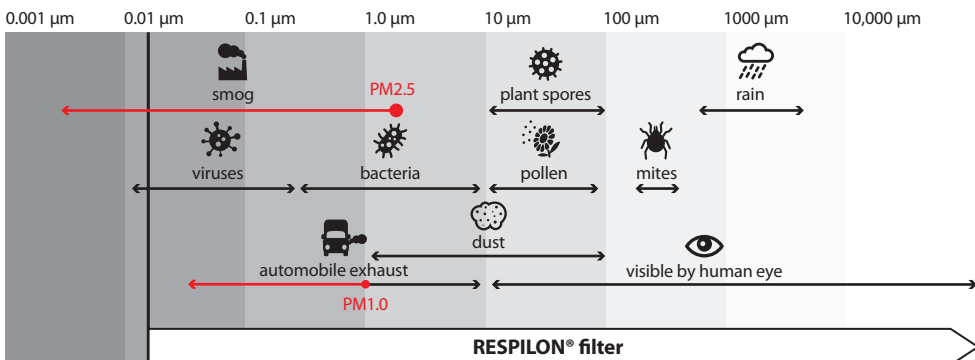
Use your other hand to pull the ear loops behind your ears.



Press the nose clip firmly around the root of your nose.



Hook the plastic buckle around both ear loops and pull it over the back of your head.



Complies with EU regulation 2016/425 | controlled by VÚBP, OS 1024 Jeruzalémská 1283/9, 110 00 Praha 1, Czech Republic  
Declaration of conformity available on: <http://www.respilon.com/prohlaseniashode4-200-4-4001FFP2NR>



8 594190 530475

Designed by RESPILON® in EU, assembled in PRC | RESPILON® Filtration Halfmask, RespiPro® Carbon, FFP2 NR, type: 4-200-4-4001 | Fulfills standards EN 149:2001+A1:2009 and GB2626-2006 KN95.

[www.r-masks.com](http://www.r-masks.com)

